

## **Historic, Archive Document**

Do not assume content reflects current scientific knowledge, policies, or practices.



62,23

[1942]

LIBRARY  
 RECEIVED  
 ★ ★  
 U.S. Department of Agriculture

# FUNK'S G

*Strain*



*Catalog*

For North Central and Central Corn Belt




Herman Barrett of Gibson County, Indiana,  
 official world yield record holder—190.1 bushels per acre.

## FUNK BROS. SEED CO.

BLOOMINGTON, ILLINOIS

Strains for North Central and Central Corn Belt

# FUNK'S G HYBRIDS BETTER NOW THAN EVER BEFORE



DR. J. R. HOLBERT  
Vice-President  
and Corn Breeder in  
charge of Funk's  
Hybrid Corn Program.

## Proved Higher Yielding Qualities because of Definite Improvements in the Foundation Inbreds

Thanks to new improvements of our foundation inbreds—you can plan on still better performance from your Funk's G Hybrids this coming season. You can plan on higher yielding qualities; tougher drouth and disease resistant ability; an increased degree of resistance to insect enemies.

## Special Funk's G Value

Under the direct supervision of Dr. J. R. Holbert, we have intensified minute but important characteristics in each of these precious inbreds. Outstanding characteristics have been improved. Then we have recombined these vigorous inbreds in Funk's G Hybrids, where the newly improved characteristics multiply their superior qualities manyfold. The result means a better yield from your field—a Funk's G value for the coming season.

## Proof from 3,000 Plots

The G Hybrid you select for your farm is one that has met rigid performance tests in your locality. Our 3,000 proving plots, located in every corn growing section of the United States, provide practical yield tests under a wide range of weather and soil conditions. Even tests remote from your farm provide performance proof under adverse insect conditions, years in advance of the time the infestation strikes your fields.

Now you owe it to yourself to look closely at the regional map on the next page. Locate your farm. Then consider each of the Funk's G Hybrids adapted to your region. These are carefully described on the pages following. You'll be delighted, I'm sure, with the accurate performance data listed. You'll be doubly pleased when you measure the yield of Funk's G from your next season's corn fields.

Sincerely yours,

*Gene Funk*



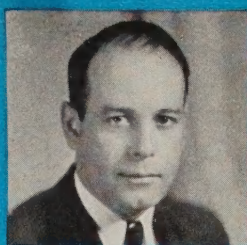
R. J. LAIBLE  
Agricultural Adviser  
holding aloft the root  
system of a Funk's G  
Hybrid.



DR. EARL G. SIEVEKING  
in charge of supervision  
of the Funk Associate  
Grower Program.



Paul Funk  
Sales Department



Ted Funk  
Manager Funk Farms



Lafayette Funk  
Director



Gene Funk, Jr., Secretary  
of Funk Bros. Seed Co.



Virgil Givens, in charge  
of Seed Production



Wright Hardin  
Assistant Corn Breeder



Leon Steele  
Assistant Corn Breeder

## STRAINS FOR NORTH CENTRAL AND CENTRAL CORN BELT

(Regions 3 and 4 Shown in Color on Map Below)

All of the Funk's G Hybrids, illustrated and described in this catalog, are adapted to the regions shown in color on the map below. Please bear in mind, however, that local conditions sometimes affect both adaptation and performance. These special local conditions are recognized and provided for. Your local Funk Representative will gladly give you every assistance in selecting the best hybrid for your farm.

**To Help You Choose** the best G Hybrid for your purpose, the illustrations of corn ears in this catalog are direct color photos. Most of the ears are shown in actual size; a few are one-third actual size. Descriptions of adaptations and characteristics of each strain are based on the experi-

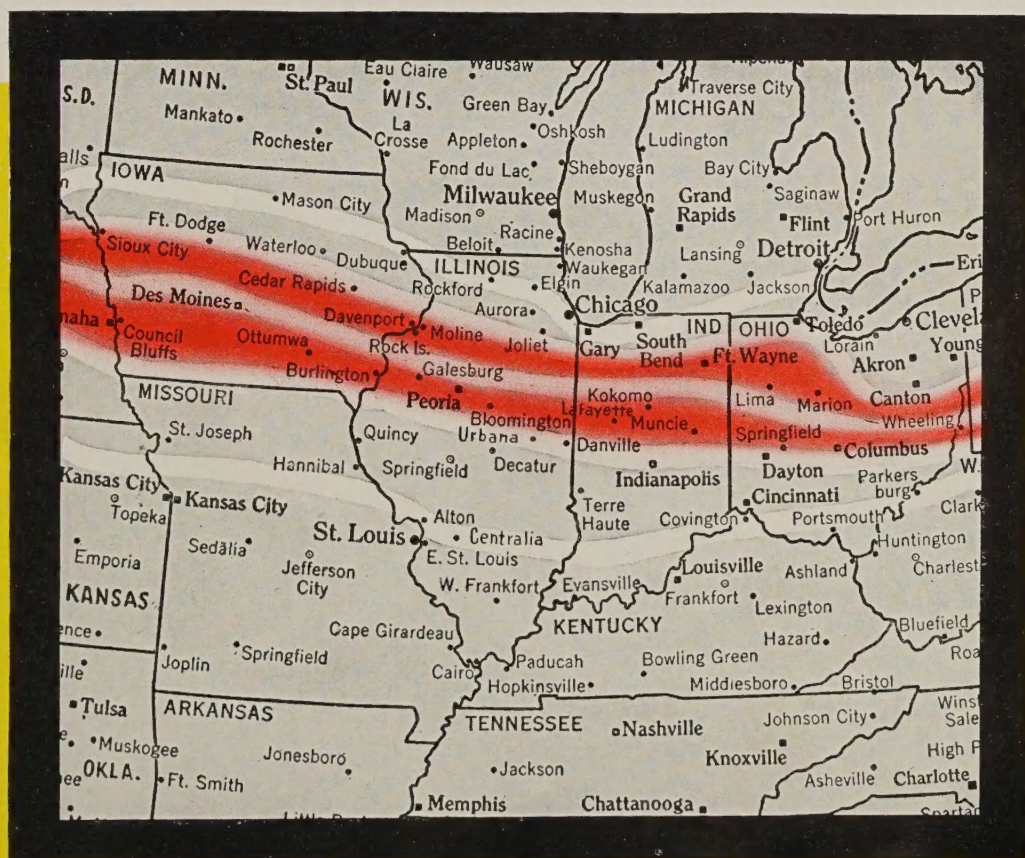
ence of farmer-customers, and observations from repeated tests in Funk's nation-wide system of proving plots.

### See G Hybrid Fields In Your Community

Convince yourself—if you've never grown G Hybrids. There are many fields within easy driving distance of your farm. See these fields; talk to their owners. Compare what you see and hear with the dependable information listed in this catalog. Then consult your nearest Funk Representative. If you do not know him, write direct to the main office for his name.

## FUNK BROS. SEED COMPANY • BLOOMINGTON, ILLINOIS

Locate your farm on this map; then refer to the numbers at the left of the map to determine your approximate corn region.



# A Champion of Champions



Halice Mardis, McLean County, Illinois, starting another crop of G Hybrids on the way to a big yield with clean cultivation. This color-photo was taken on the farm of Walter Meers, near Ellsworth, which Mr. Mardis farms.

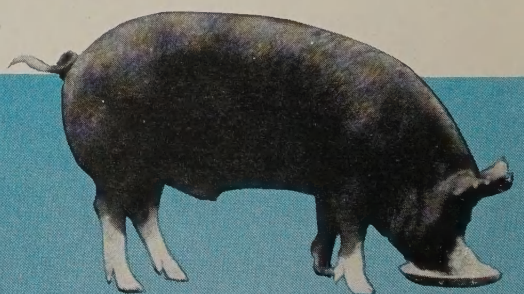
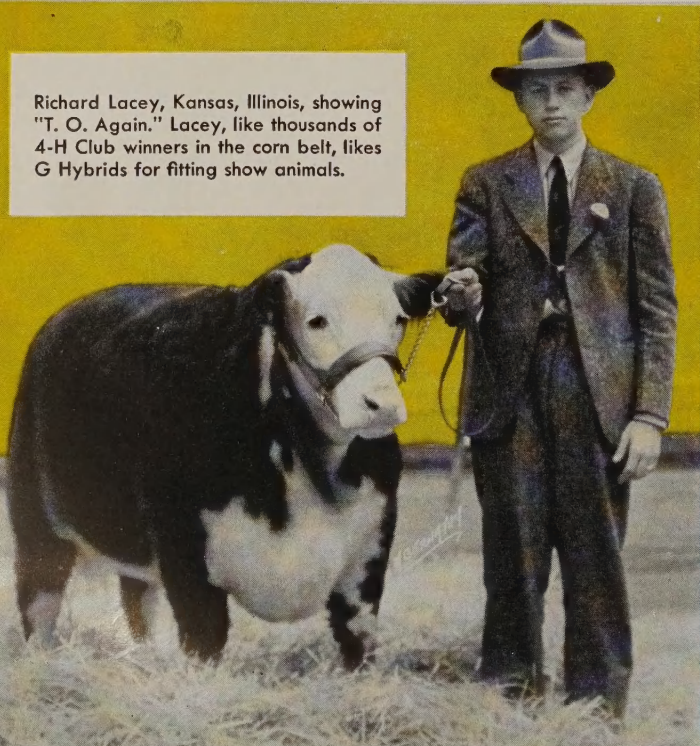
**O**VER THE YEARS, G-94 has made an unsurpassed record for big yields when grown on fertile soils under ideal conditions. Yet, it shows up as a leader when conditions are toughest. You'll be glad you planted G-94 when storms, insects, drouth or heat threaten every corn field in your community. Your corn will stand dark green and growing long after lesser corns have curled their leaves and turned brown.

**Remarkable Yield Records:** G-94 produces remarkable yield records throughout its entire adapted area. Rudolph Gerdes of Craig, Missouri, writes: "Just a line to tell you how pleased I am with G-94. This corn hasn't had a drop of rain since June and I believe it will make over 70 bushels per acre." From Liberty, Nebraska, Frank Horsky writes: "Never saw a better corn. G-94 is extra good, and will yield about 60 bushels per acre which is very good for south Gage County." In Indiana, Edgar Reitzel, Hendricks County yield king, and Ben. J. Smith, Owen County champion, used G-94 last year. In Illinois, William Woods, of McLean County, grew G-94 with other Funk Hybrids to set a new World 10-acre yield record of 174.3 bushels per acre in 1941. In Iowa, P. J. Roth had the second G-94 field to win the Henry County yield contest in two years, succeeding another G-94 user, Raymond Baker, as county champion.

**Champion Feeders Praise G-94:** You'll be pleased with the gains your livestock makes when you feed G-94. The medium, utility-type kernels of G-94 are the choice of prize-winning herdsmen everywhere. Richard Lacey, Edgar county, Illinois, used G-94 to fit "T. O. Again," Grand Champion of the Junior Feeding Contest, Champion Hereford and Reserve Grand Champion Steer of the 1941 International Live Stock Show. Ivan T. Snowden fed his national champion barrow G-94.

For two years 12-year-old Bert Wimmer, Parke County, Indiana, has topped 4-H and open class Shorthorns at the Indiana State Fair; both steers were fed on 100 bu. G-94 crops raised on the Wimmer farm.

Richard Lacey, Kansas, Illinois, showing "T. O. Again." Lacey, like thousands of 4-H Club winners in the corn belt, likes G Hybrids for fitting show animals.



Fattened on G-94, this Berkshire was made Grand Champion Barrow over all breeds at the new National Market Hog and Pork Show at the Illinois State Fair. The pig, bred and shown by Ivan T. Snowden, Mattoon, Illinois, was Grand Champion both on foot and in carcass.



Grim-faced Stanley Yeager setting a new state husking record of 30.99 bushels in the 1941 Pennsylvania husking contest. He grows G-94 on his York County farm, likes its yielding, standing and easy-husking qualities.

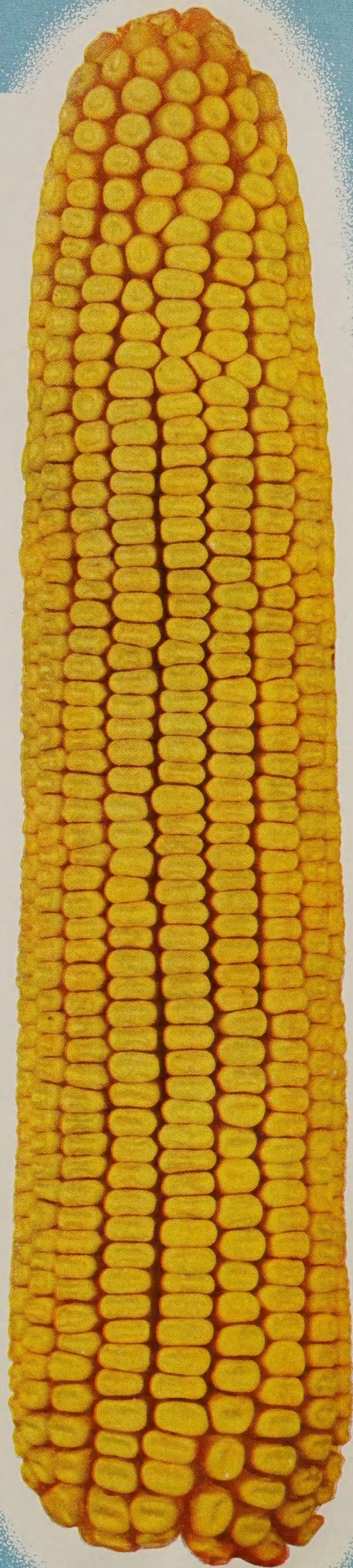


**ADAPTATION:** Full season maturity in the south half of Region 4. Medium to full season for Region 5. Adapted to a wide range of soil types and fertility levels, G-94 does best, of course, on the richer soils.

**You'll be Proud to Grow G-94:** If you admire rugged corn, you'll like G-94. A dark green strain that stands up exceptionally well, it is remarkably resistant to chinch bug and root worm attacks. It also shows considerable resistance to grasshoppers and Stewart's Disease. G-94's heat and drouth resistance will bring it through unfavorable summer seasons with a minimum of damage. Then, too, it has exceptional cold resistance and can be planted early. It grows rapidly, gets ahead of weeds and stays ahead. Whether you husk by hand or with a machine, you'll find G-94's short-shanked, cylindrical ears growing at a convenient, medium height. It produces high yields and sound grain of excellent marketing or feeding quality.

**Easy-Husking G-94 is Champions' Choice:** O'Dell Ivers husked 40.66 bushels in a field of G-94 to set a new Indiana record in 1940. Stanley Yeager's Pennsylvania record of 30.99 bushels was made in a field of G-94.

The big yields you get with G-94 come from moderately long, nearly cylindrical ears like these grown in Greene County, Illinois. The kernels are medium in width and length. Their plumpness assures heavy yields of top-quality feed or market grain which is never hard or flinty.



# A NEW *Performance* LEADER

**Large Ears, Vigorous Roots,  
Sturdy Stalks Give G-169  
Superior Yielding Power**

FUNK'S G  
**169**

**ADAPTATION:** Full season maturity for the south half of Region 3 and medium to full season for Region 4. Early for Region 5. An excellent silage corn for Regions 2 and 3.

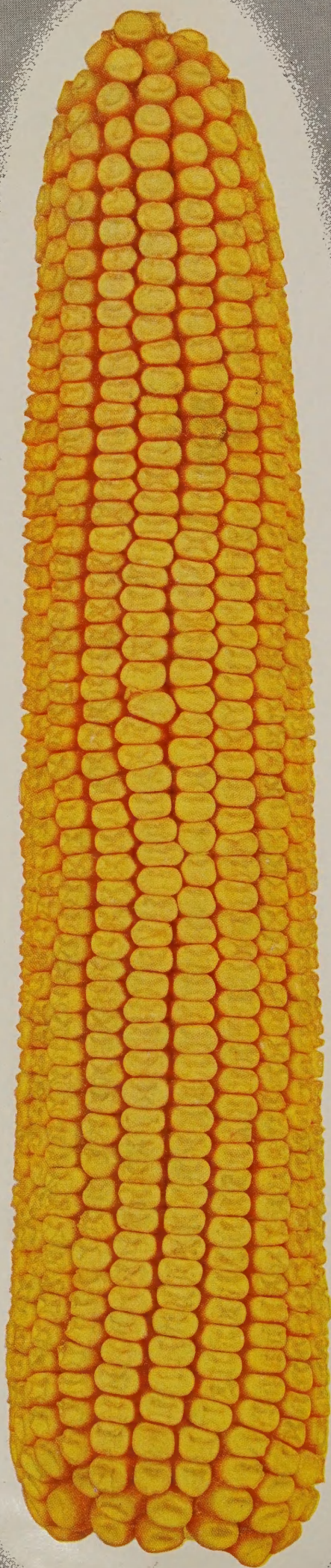
**A World's Record Yielder:** G-169 was one of the four G Hybrids used by William Woods, when he set the world's 10-acre corn yield record at 174.3 bushels per acre in 1941. This hybrid is a remarkably early starter and a fast, vigorous grower. It is one of the outstandingly high yielders in its adapted areas.

**It Can Take Adversity, Too!** Although G-169 has gained wide popularity as a heavy yielding, fine feeding strain, you'll find it more than just a "fair weather" corn. You'll like the way its excellent root system and stiff stalk keep it standing so you can speed up harvesting operations without waste. G-169's unusual resistance to chinch bugs, root worms, heat and drouth means that you will get crop income, even though these hazards strike your locality. Here's what Peter Van Ham, Pella, Iowa, says: "I especially like G-169. It produces bumper crops under favorable conditions and does remarkably well even in abnormal seasons. When many other hybrids turn yellow because of drouth, G-169 holds its dark green color."

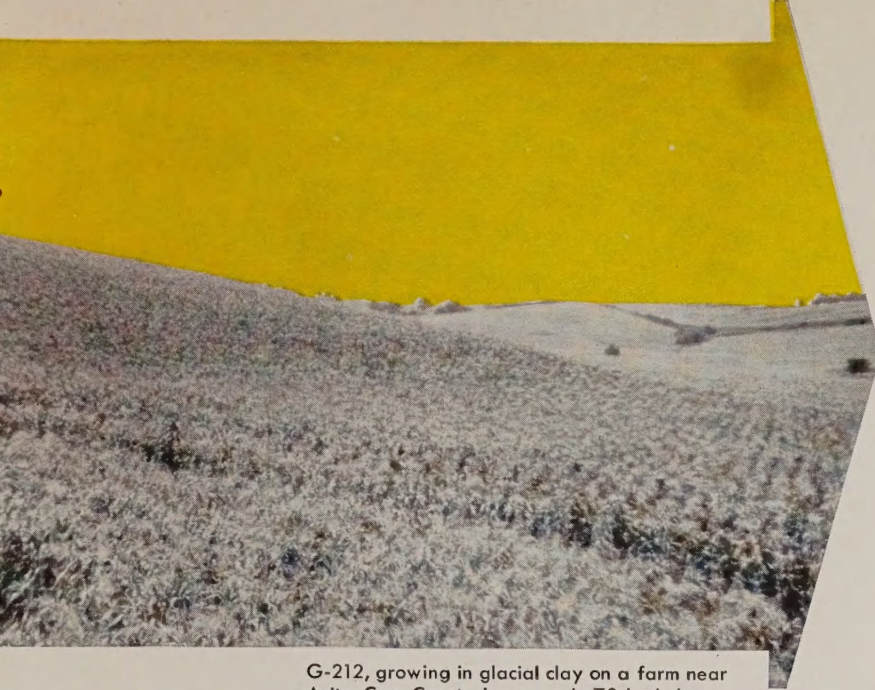
6



William Woods, McLean County, Illinois, smiles happily over a load of G-169 with which he made the highest yield in the 1941 official 10-acre yield contest sponsored by the Illinois Crop Improvement Association, and the University of Illinois' College of Agriculture.







G-212, growing in glacial clay on a farm near Anita, Cass County, Iowa, made 70 bushels per acre, the largest crop on the field in 30 years.



**RELIABLE ON THIN SOILS...  
SUPERIOR ON RICH ONES**

**ADAPTATION:** Full season maturity for south half of Region 3. Medium to full season for Region 4, with a fine yield record in Region 5. Has a highly satisfactory farm record on medium to low fertility levels as well as on good land.

**One of the Oldest But Still a Leader:** Few hybrids have enjoyed as many years of usefulness as G-212. Its ability to yield abundantly under a wide range of soil, moisture and weather conditions keeps this hybrid continually popular from the Atlantic to the Rocky Mountains. While G-212 shows up well on average land, it is always a favorite with hill farmers. Colorado corn growers report that G-212 is outstanding when grown under irrigation. Thousands of corn producers have grown G-212 every year since 1937.

**And It Can Take a Lot of Punishment, Too:** G-212 carries its ears at medium height, has extra short shanks which make it ideal for mechanical pickers. Its rather heavy leaves are dark green, making it an attractive, heavy yielding silage corn in Colorado and the Northern Corn Belt. These features are your assurance of a profitable corn crop when you plant G-212. Glen Denny, Delta, Iowa, writes: "I am well pleased with my G-212. It stayed green and made a good crop in spite of drouth during July and August."



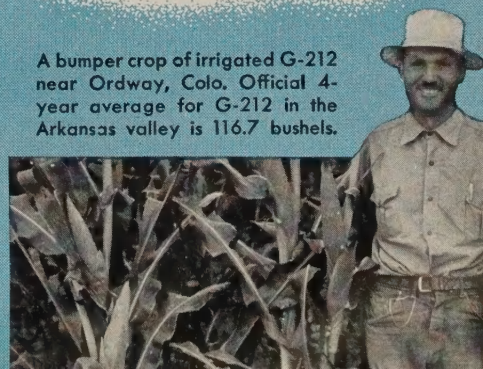
Howard Bacon won high score with G-212 in the official Illinois contest based on yield, quality and production cost.



Clark Van Auken, Forest, Indiana, left, and his tenant, Doyle Moore, are well pleased with the 80-bushel yields they get with G-212. These veteran corn growers plant round kernels because round kernels plant as accurately as flats and cost less.

H. S. Mehaffey, Nebraska Master Farmer, likes G-212's fast early growth. He has used round kernels for 3 years.

A bumper crop of irrigated G-212 near Ordway, Colo. Official 4-year average for G-212 in the Arkansas valley is 116.7 bushels.



FUNK'S G

53

# FAVORITE IN FIELD AND FEED LOT



Eston Bertram III, Wayland Hopley Farms, winner in four state fairs and two national livestock shows.

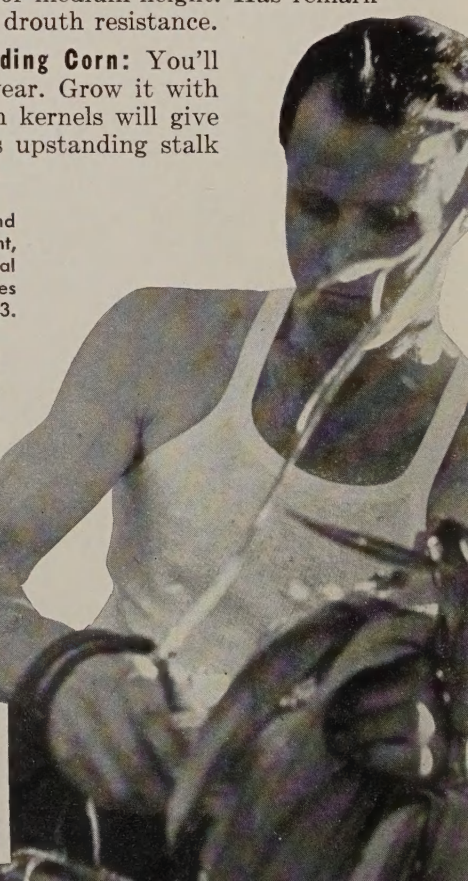
**ADAPTATION:** Full season maturity for the south half of Region 3. Medium to full season for Region 4. Early for Region 5. G-53 is best adapted to medium to high fertility levels.

**G-53 Combines Market and Feeding Qualities:** Funk's Hybrid G-53 excels in the feedlot. G-53 has an abundance of soft starch that makes it a favorite with feeders and showmen clear across the Corn Belt. Top-notch breeders like the Wayland Hopley Farms, Inc., Atlantic, Iowa, use G-53 in fitting prize-winning Angus cattle.

**A Heavy Yield Producer:** Yields of 100 bushels and more to the acre are frequently recorded for G-53, so well adapted to the high fertility soils. This hybrid holds a long-time record and is one of the few strains ever to win two gold medals in the Iowa corn yield test. G-53 has a single ear grown low on a stiff stalk of medium height. Has remarkable chinch bug, cold and drouth resistance.

**Cash In On This Big-Yielding Corn:** You'll need plenty of feed this year. Grow it with G-53. Its deep, soft starch kernels will give you a good yield. And its upstanding stalk will save on husking costs.

Holding the husk in his left hand and snapping the ear out with his right, after opening the husk, National Champion Floyd Wise demonstrates the easy-husking qualities of G-53.



*Thoroughly*

**WEATHERPROOFED**

FUNK'S G

**72**



G-72, shown above on the right, is especially desirable because of its rapid early growth which makes early cultivation possible.

**ADAPTATION:** Full season maturity for Region 3. Medium to full season in Region 4. G-72 has a fine record as a new hybrid on the varying fertility levels across the Central and Western Corn Belt.

**Good Ear Size Contributes to Yield:** In all its hundreds of tests under all conditions, G-72 has been outstanding. Its ears of good length and diameter make it an excellent yielder. Its medium rough indentation and medium rough, starchy kernels make it highly desirable for livestock feed.

**G-72 Is Bred to Yield:** Characterized by dark green foliage throughout the growing season, G-72 develops a stalk of medium height and excellent standing quality. Its splendid root system enables it to withstand heat, wind and drouth in fine fashion. This new G Hybrid is especially well adapted to machine harvesting.

**G-72 Is Thoroughly Tested:** Funk Bros. Seed Company maintains 3,000 Proving Plots located in all corn states. Because these trial areas are so widely spaced, each corn strain grown in them is subjected to all combinations of weather and soil conditions and all crop hazards. When G-72 was tested in Funk's Proving Plots for several years, it proved itself superior in all desirable characteristics, and outstanding in ability to yield. These tests are your assurance that G-72 will perform with the best when you grow it on your farm.



Donald Kozik, Benton County, Iowa, with his prize-winning Herefords. G-72 comprised part of their ration.





# Resistant

**TO WORMS • HOPPERS  
BUGS • COLD • HEAT  
DROUTH**



Proof that G-32 can stand up under the onslaughts of whatever Nature sends against it. G-32 (left) shows clean aisles between rows of this Buffalo County, Nebraska, field. The adjacent competitive hybrid lodged badly when stalks dried out and broke over after the last irrigation.

**ADAPTATION:** A full season hybrid for the south half of Region 3 for early planting. Medium to full season for Region 4. Early for Region 5. Funk's G Hybrid G-32 is an outstanding corn for soil of medium to high fertility through the major corn-growing portion of the corn belt.

**G-32 Yields More Because It's Tougher:** Year in and year out, dependable G-32 produces a crop because it is highly resistant to adverse conditions. That's why it always ranks near the top in any yield test. Then, too, it comes through cold springs better than most corns. G-32 has extremely stiff stalks which assures standability. Wherever it is grown, from Ohio to Nebraska, G-32 turns in an excellent yield record.



G-32 ears are rather long, with a deep, plump, heavy kernel. Its popularity is due to its consistent performance under all conditions.

Roy Kumler, McLean County, Illinois, proudly displays G-32 ears. G-32 is a favorite, too, with Bob Kendall of Fairbury, Nebraska. Bob writes: "I had some other hybrids alongside my Funk's G-32. You could pick it out all summer because it stood better, had greener foliage and was more uniform in height. It husked out better, too."





This striking photograph, taken in Lancaster county, Pennsylvania, clearly shows the superior Japanese Beetle resistance of G-63, the pile of corn on the left, as compared with a susceptible hybrid. Jap Beetles prevent pollination by feeding on green silks. Now serious in New Jersey, Southeastern Pennsylvania, Delaware and Maryland, these pests have been found as far west as St. Louis.

# DON'T OVERLOOK THESE EXCEPTIONAL HYBRIDS!



## THIS ONE REPELS JAP BEETLES

**ADAPTATION:** Best suited in maturity for the southern part of Region 3 and the northern part of Region 4. Funk's Hybrid G-63 does especially well on the lighter soils in addition to its outstanding performance on high fertility levels.



## THIS ONE IS PRIZED FOR FEED

**ADAPTATION:** Full season for Region 3, a little late for the northern edge of this area. Medium maturity for Region 4. This hybrid gives a fine performance on soils of medium to high fertility levels.



### Fits Many Conditions:

G-63 carries its ears at a medium height on stiff, sturdy stalks. It has been used successfully over a wide range of conditions in Ohio, Indiana, Illinois and Iowa. Fine for late planting in northern part of Region 5. When harvested mechanically, it husks particularly clean. It always produces high quality grain



### G-170 Is Highly Palatable:

As a livestock feeder you will like this deep-grained, medium, rough-kerneled type and you'll like the way it yields, too. Its single ear is carried low on a stiff, upstanding stalk. G-170 has what it takes for the north central corn belt but it is *not recommended* where the customer wants hard flinty corn.



G-37 roots compared with those of open pollinated corn.



## A NEW HYBRID . . .

# *Good For* **TOUGH** *Going*

**ADAPTATION:** Full season maturity for the south half of Region 2 and the north half of Region 3. Medium maturity for the north half of Region 4. Has an outstanding yield record in Regions 3 and 4. G-37 is just a little earlier than G-53 and G-32 and just a few days later than G-66.

**Storms Don't Faze It:** Here is a corn outstanding in its ability to yield in the face of adversity. It has defied every storm, including the devastating wind of Nov. 11, 1940. Superior stalk quality and massive root development give G-37 the power to withstand heat, drouth and wind conditions that would flatten other hybrids. Its ears, placed at medium height, are convenient for either hand or mechanical husking.

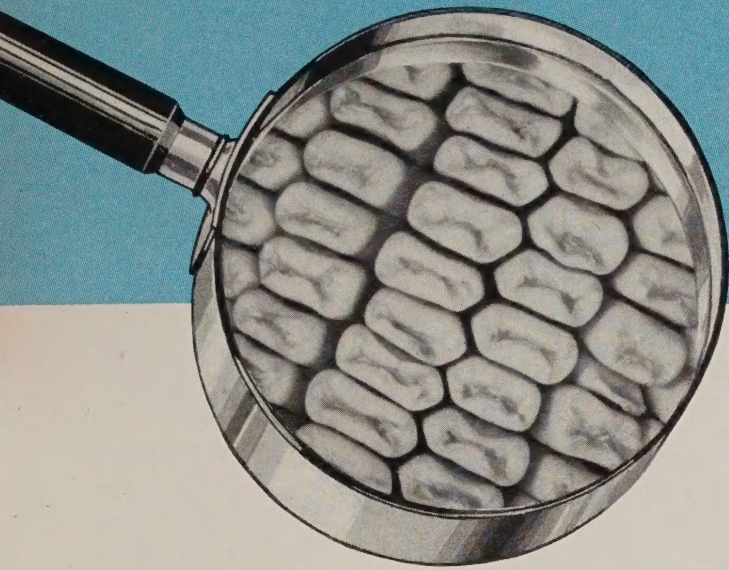
**Insects Can't Beat It:** If your farm is located in an area of heavy insect infestation, you can count on G-37 to come through with a good yield. Few hybrids equal G-37 in resistance to European corn borers, root worms and chinch bugs. Farmers who have tried G-37 recommend it when conditions are really tough. Insure your crop against insects and adverse weather this year. Plant G-37.

When a heavy infestation of chinch bugs riddled a popular competitive hybrid, the G Hybrid, growing in the next row, continued to flourish. Even under the killing onslaught this tough G Hybrid resisted the attack and continued growing.

It is against second brood chinch bugs which attack the plant at this advance growth stage that G-37 resistance is aimed. Barriers are the only defense against first brood but G-37 will take care of itself against the bugs hatched from first brood adults that fly in the field.

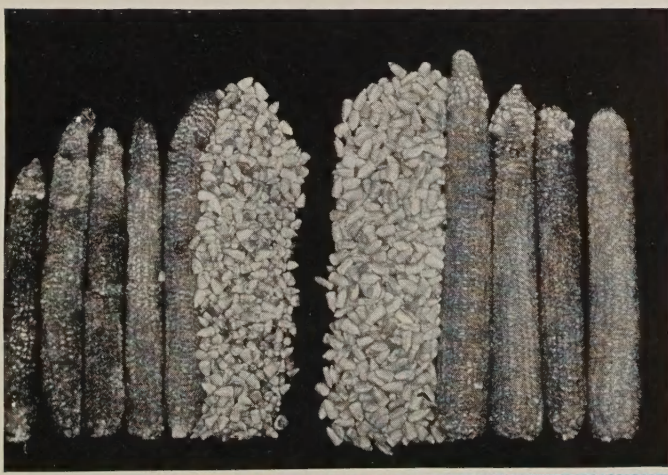


# Step Up YOUR YIELDS WITH

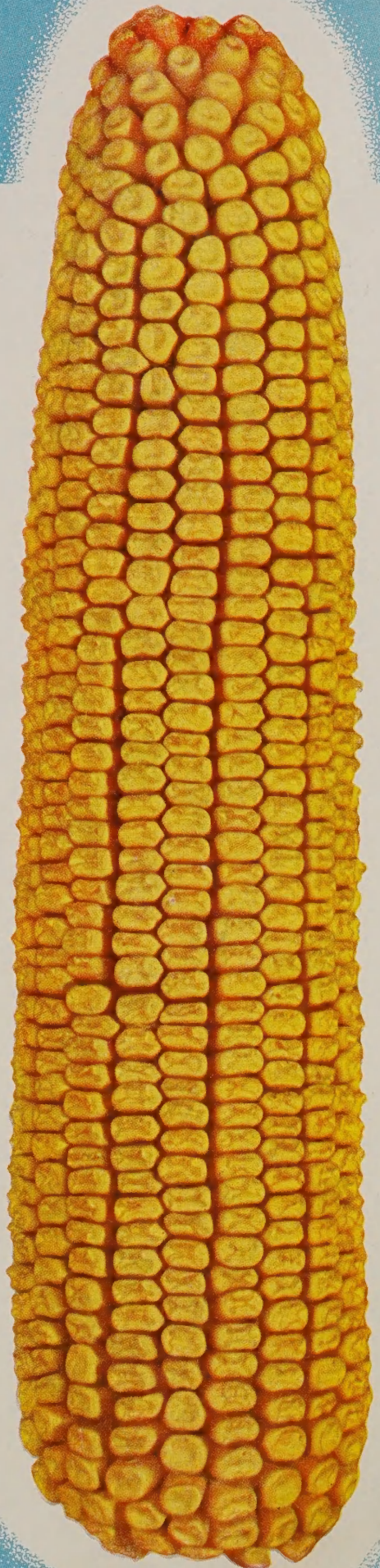


**ADAPTATION:** A day or two later than G-66, this heavy yielding new G Hybrid is best adapted to Region 3, where it is a full season corn. G-67 is medium-to-early in Region 4. It will yield abundantly in Region 2 when fertility levels are exceptionally high.

**Get These Advantages:** After four years of extensive testing under all conditions of soil and weather, G-67 has proved itself an outstanding yielder. First sold commercially in 1941, G-67 was widely planted in 1942—prime evidence of its yield superiority. G-67 gets off to a fast, vigorous start making early cultivation possible, thus reducing the labor of keeping weeds in check. G-67 remains dark green through its entire growing period, but the ears dry quickly when ripe. Quick-drying ears are least susceptible to molds and rots, a characteristic which means more grain of high quality for market or feed. Then, too, quick-drying ears permit early harvest. G-67 has a deep-dented kernel and is highly palatable to all classes of livestock. G-67 has a splendid record for withstanding high winds—your assurance of upstanding corn for economical harvesting by machine or by hand.



Here is a graphic illustration of ear rot damage to quality and yield. The four ears on the right produced more grain than the five on the left. All corn on the right is sound, all on the left is rot-infected and of very low grade. G Hybrids are remarkably free of ear molds and rots because they are bred to resist them.





## *Standability!*

**Rough, Deep-Dented Soft Kernels  
RESISTANT TO INSECT PESTS**

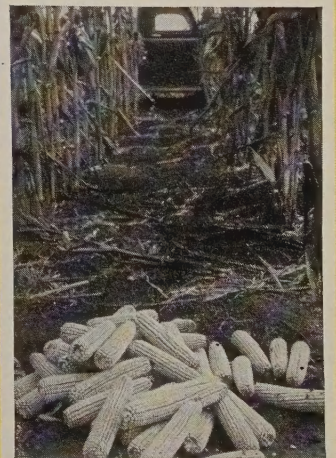
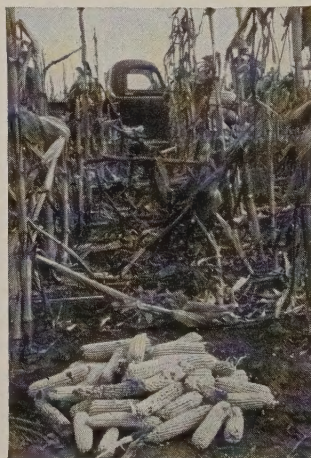


**ADAPTATION:** Ideally adapted to Region 3, where it is medium to full season for the north half and early to medium maturity for the south half. G-66 also matures a high yield on the good fertility levels of the southern part of Region 2. It does well on all soil types.

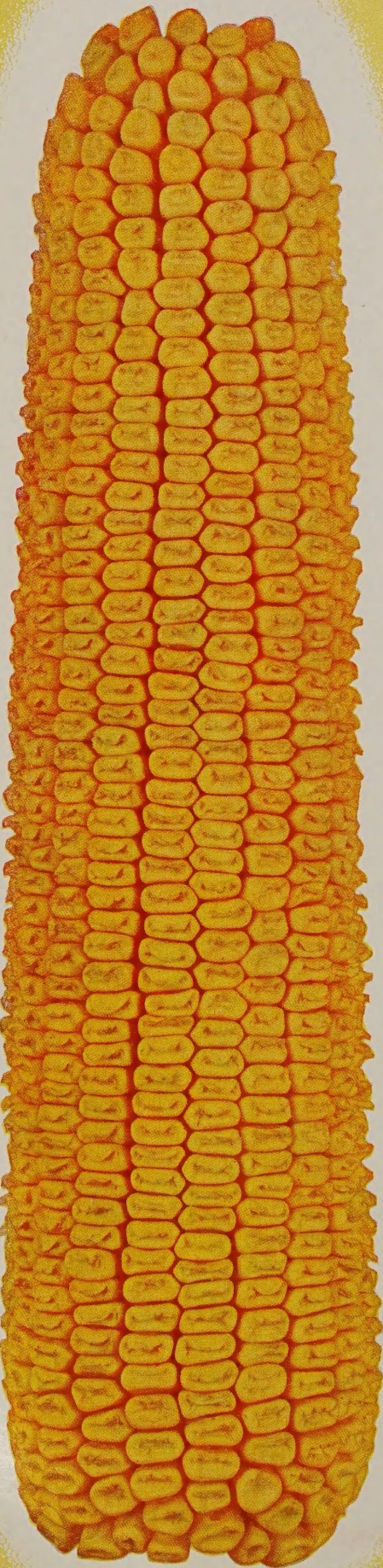
**“Like a Regiment of Soldiers”:** That’s the way farmers describe the exceptional standability of G-66 following demonstrations like the 1940 Armistice Day storm in Iowa or the field in the photo above which Lloyd O’Nele of Chapman, Nebraska, left until March 20 and then harvested 81 bu. per acre with a mechanical picker. The sturdy stalks defy wind and storm, and the short shanks hold the ears.

**The Kind Your Livestock Likes:** Feeders and Hogmen, like John C. Schulte & Son, originators and breeders of Hereford swine, of Norway, Iowa, are boosters for G-66. The big, cylindrical single ears combine size and high shelling percentage to produce exceptional yields. The deep kernels are relatively rough and of soft texture, giving G-66 the grain quality that pleases feeders who want corn that’s not hard and flinty.

**But the Bugs Pass It By:** Chinch bugs in the second brood are seldom a factor in G-66 fields. And in north central Indiana and northwest Ohio, G-66 for three years has been consistent in its resistance to the European Corn Borer.



Resistance and susceptibility to corn borer in a Funk Research Plot near Kokomo, Ind. The hybrid, on the left, has been a popular competitor. But after corn borers, farmers demand the upstanding, bigger-eared G-66.





Place Your Order for

Funk's G Hybrids

**NOW**

Then You Can Be Sure Your  
Next Season's Seed Corn Will  
Be Ready When You Want It!



R. J. 'RUSTY' LAIBLE  
Agricultural Adviser in Charge of Sales,  
Funk Bros. Seed Company

## See Your Funk's G Representative Today He Will Gladly Give You Every Assistance in Planning Your Planting and in Ordering Your G Hybrid Seed

Assure yourself now of Funk's G Hybrid Seed Corn for your next planting. Decide on the strain you need for your farm and your requirements. Then arrange for your seed. There is a definite reason for making arrangements as soon as you possibly can. Thousands of corn growers have already placed orders, and the supply is not unlimited. Avoid the possibility of disappointment by acting today.

### Consult The Funk's G Representative Nearest You

The Funk's G Representative near you is thoroughly familiar with corn growing conditions in your neighborhood. He will gladly give you every assistance in planning your planting, and will recommend the Funk's G Hybrid to meet your requirements. He will reserve your seed, as you direct. Why not write or telephone him now before

you put this catalog aside? If you don't know his name, write direct to our main office at Bloomington, Illinois, for complete information. There is no obligation.

### How To Order Your Seed

It is easy to order your Funk's G Hybrid Seed Corn now. Simply make a small deposit of \$1.00 per bushel with your order; balance need not be paid until the seed is delivered. Or pay in full with your order, if you desire. In addition, your order should clearly state:

- (a) Quantity of seed you need (c) Grade of seed  
(b) Strain you prefer (d) Price

Our representative will supply you with an order blank, or write to the main office for a set. Retain one of the copies of the order for your own information.

### Double Checked for Grade and Germination in Funk's Laboratory

As soon as your order is received, we set aside your seed in one of our insured warehouses, especially designed for storing seed corn under controlled conditions. The seed is carefully checked—twice—for germination and planter plate accuracy—also for viability, vigor and freedom from seed-borne diseases. IT IS TREATED WITH SEMESAN, JR., to resist soil-borne diseases that may be present on your farm.

All this information is shown on the Guarantee tag which is securely attached to each bag of your seed. A Seal of Approval with each bag is signed by E. D. Funk, President, and Dr. J. R. Holbert, Vice-President. Be sure to place your order today.



**FUNK BROS. SEED CO.**

BLOOMINGTON, ILLINOIS



**FUNK'S G HYBRIDS** were used at the National Cornhusking Contest, 1941. Despite the mud, the winning husker, Floyd Wise, set a new 45.37 bushel national record for commercial fields.

